

Works for Jandorf Lamp Harps:

- #60121 – 8" Polished Brass
- #60122 – 10" Polished Brass
- #60123 – 12" Polished Brass
- #60124 – 8" Brushed Pewter
- #60125 – 10" Brushed Pewter
- #60127 – 8" Antique Bronze
- #60128 – 10" Antique Bronze

What's Inside

1 – Lamp Harp (B)

What's Its Purpose

Protects bulb from lamp shade and holds lamp shade in place.

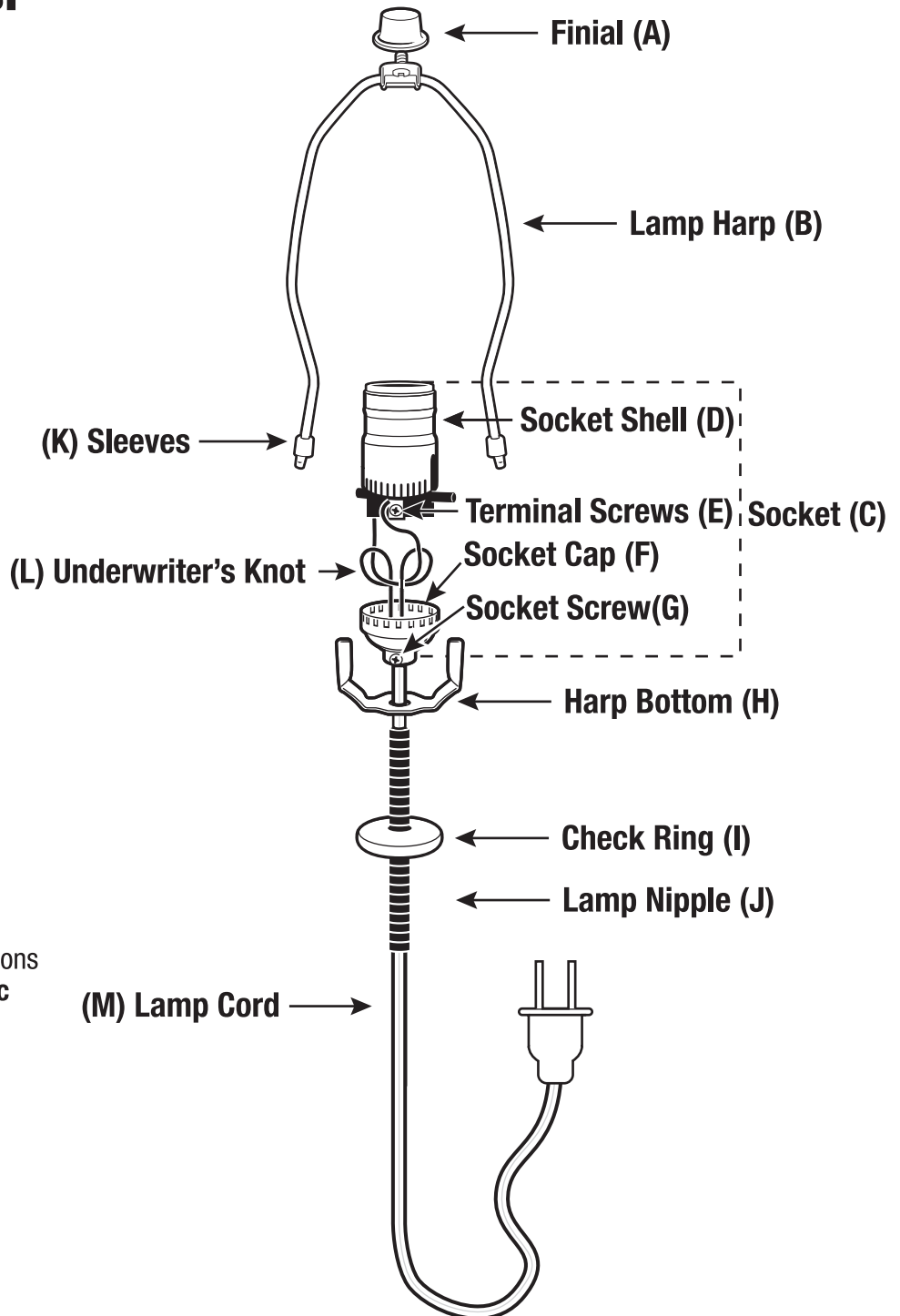
What's Needed

Screwdriver
 Wire Stripper

WARNING

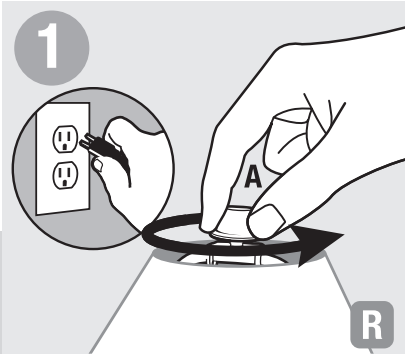
- Before beginning **TURN OFF POWER** by unplugging lamp from wall outlet.
- Follow local electrical regulations or codes when installing and using this product.
- Light bulbs generate heat – maintain manufacturer's recommended space between shade and bulb.
- Deviation from the assembly instructions may result in a **risk of fire or electric shock.**

Project Overview

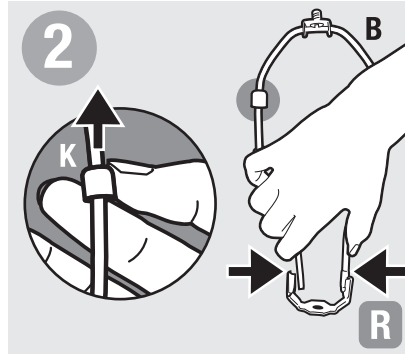


LAMP Harp

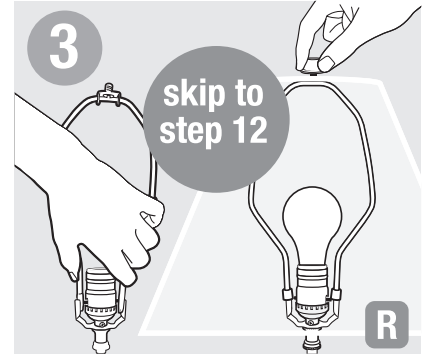
Removal



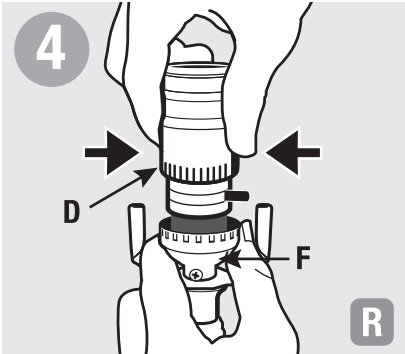
Before beginning **TURN OFF POWER** by unplugging lamp from wall outlet. Unscrew finial (A), remove lamp shade and bulb.



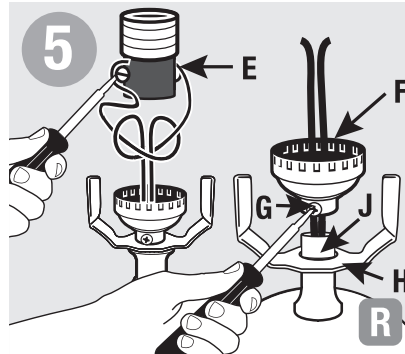
Lift sleeves (K) toward top and gently squeeze harp (B) sides. Remove from harp bottom (H).



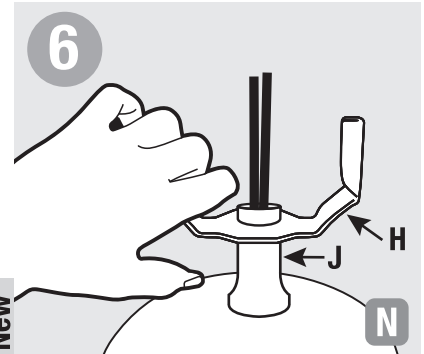
If reusing existing harp bottom, skip to step 12.



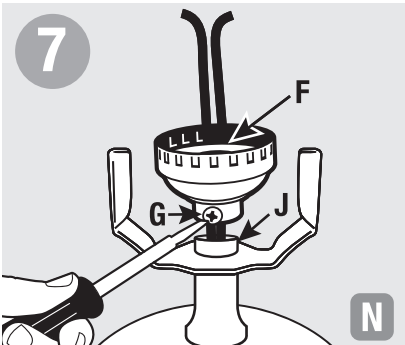
Press sides of socket shell (D); rock shell back and forth and lift up to remove from socket cap (F).



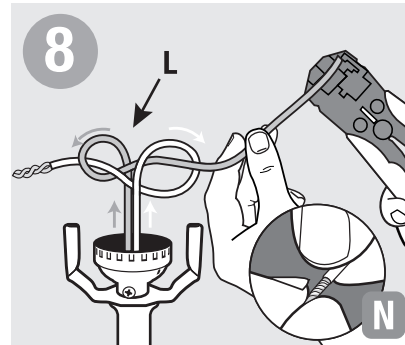
Unscrew terminal screws (E) to release wires. Unscrew socket cap (F) from lamp nipple (J) and remove. Remove harp bottom (H).



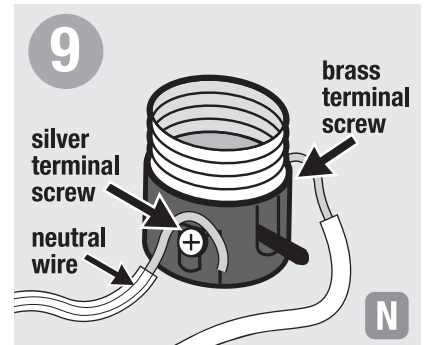
Place new harp bottom (H) over lamp nipple (J) and feed wires through.



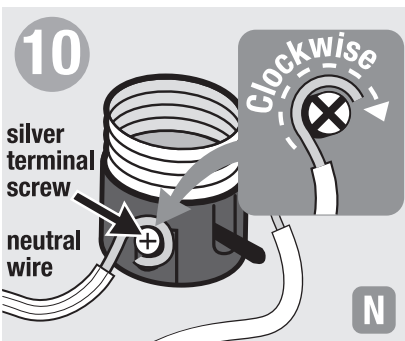
Insert wires through bottom of socket cap (F). Thread socket cap onto lamp nipple (J) and tighten. Tighten socket screw (G). Cardboard insulation disc should be firmly in bottom of socket cap (F).



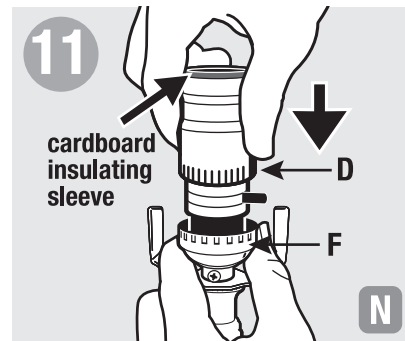
Split cord about 2" from end and tie an Underwriter's Knot (L). Using a wire stripper, expose 1/2" of bare copper strands from cord. Twist copper strands tightly together.



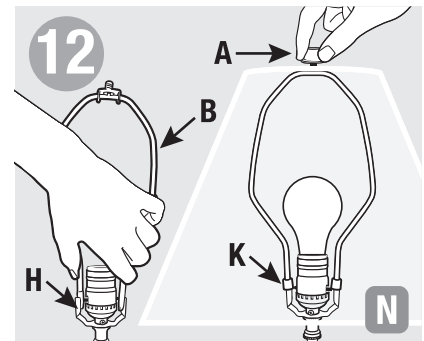
Connect ribbed neutral wire (feel outside of cord for ribbing) around silver terminal screw. If no ribbing, determine the neutral wire and connect around silver terminal screw. Connect smooth wire around brass terminal screw.



Wrap each wire clockwise 3/4 turn under head of terminal screw. Tighten screws. Cut loose strands.



Ensure cardboard lining is in place, then fit socket shell (D) into socket cap (F) by gently rocking side-to-side, until shell snaps into place with clicking sound.



Insert top of harp (B) into harp bottom (H) and slide sleeves (K) to lock in place. Insert bulb, shade and finial (A).